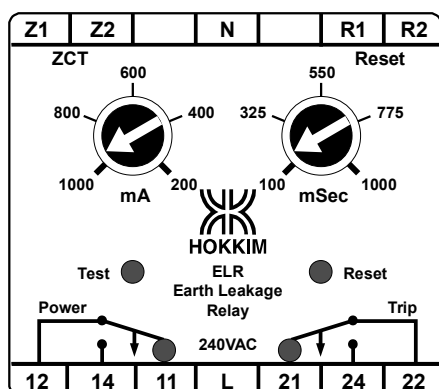


Model : **ELR-1**
 Function : Earth Leakage Relay for Zero-Phase Current Transformer (ZCT).

Utilization:

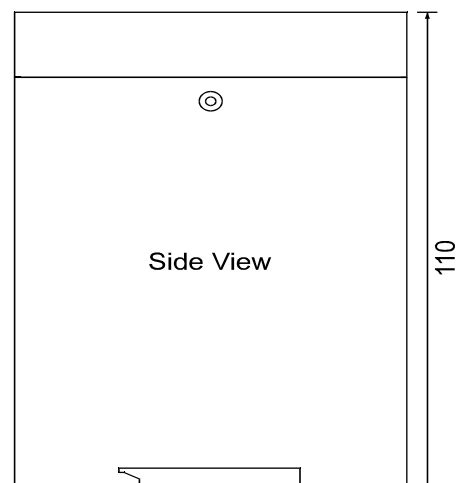
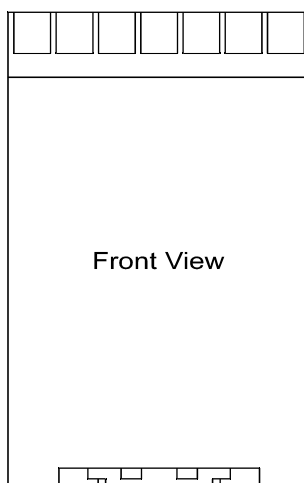
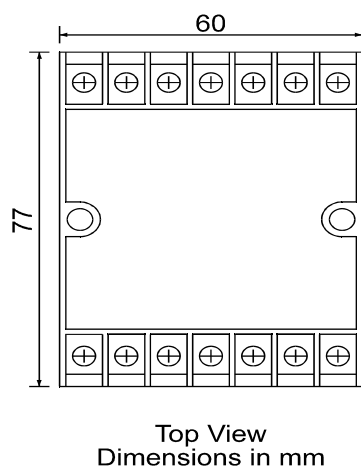
The ELR-1 is use in conjunction with a ZCT to detect earth leakage in 3-Phase 4-Wire supply. When leakage current occurs in one of the phase, the ELR-1 will detect the leakage via the ZCT . When the leakage current exceeds the setting of the ELR-1, the Trip contact will energize and latch after the set time delay. The Trip contact can be reset by pressing the Reset button or through an external button connected to terminals R1 & R2.

There is another Power contact which energize when the supply is On. This contact can be use in conjunction with a UVT to trip the breaker when the auxiliary supply fails. In addition there is a Test button for testing the trip function of the ELR-1. The green LED indicate the Power contact is energized and the red LED indicate the Trip contact is energized.



Technical Data

Auxiliary Supply Voltage	: □ 110V □ 240V
	□ 380V □ 415V
Frequency	: 50~60Hz
Consumption	: 2VA
ON Response Time	: 50 mSec.
TRIP Response Time	: 100 ~ 1000 mSec.
Accuracy	: ± 3% due to ZCT
Leakage Adjustment	: 200 ~ 1000 mA
Delay Adjustment	: 100 ~ 1000 mSec
Indication	: Green LED (Relay On) Red LED (Relay Trip)
Output Contacts	: 5A 240V 50Hz AC1
	Relay ON 11-14 Close 11-12 Open
	Relay TRIP 21-24 Close 21-22 Open



Model : **ELR-1**
 Function : Earth Leakage Relay for Zero-Phase Current Transformer (ZCT).
 Diagram : *Connection for Shunt Trip coil.
 *Connection for Under Voltage trip coil

